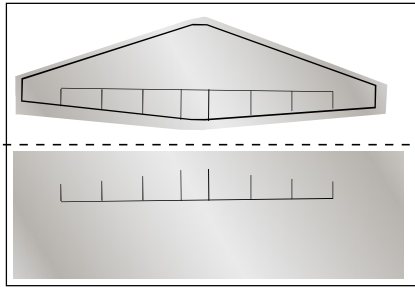
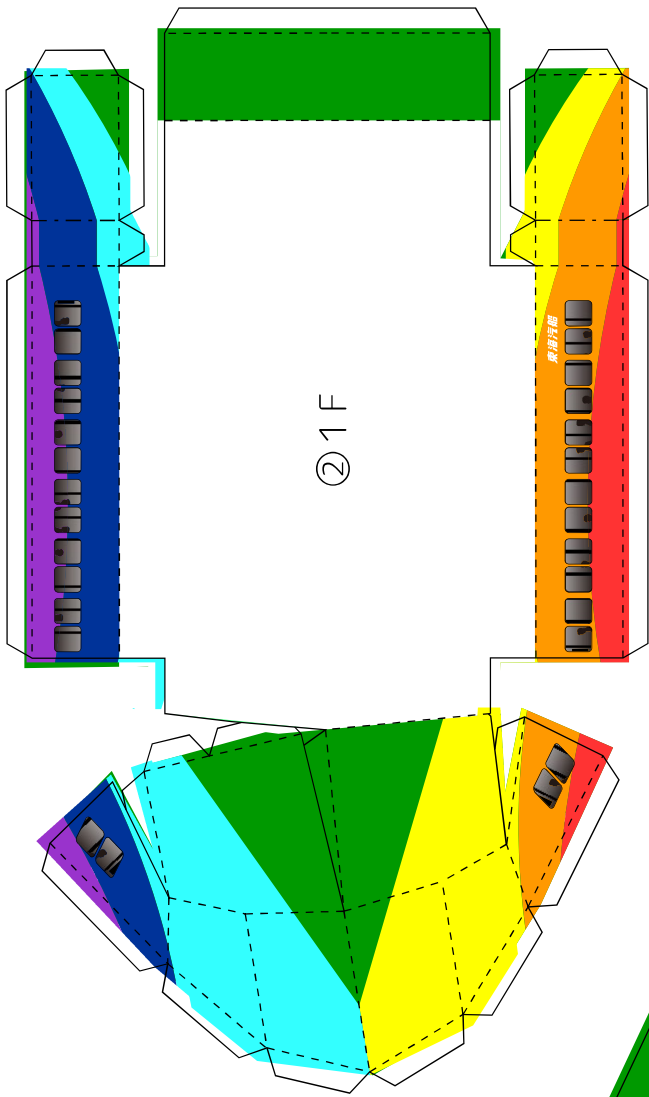


⑪前羽根

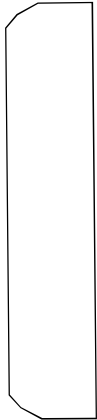
/ front wing



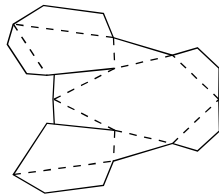
②1F



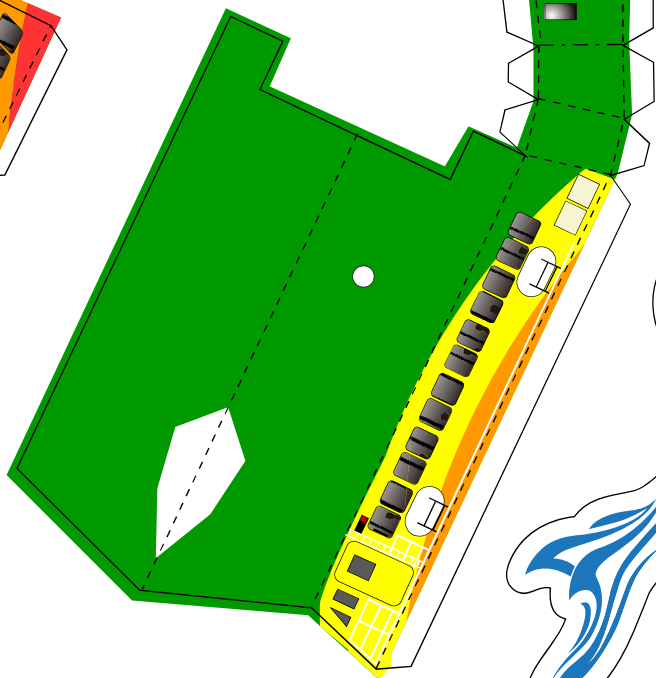
⑦2Fデッキ / deck



⑬アンテナ部 / antenna

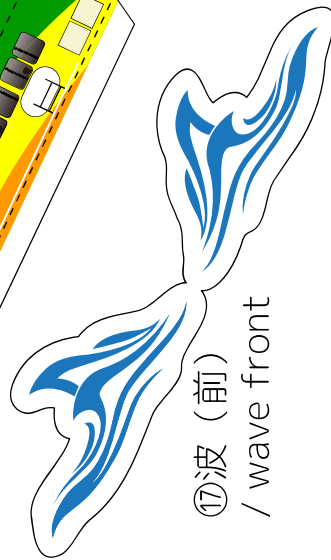


⑤2F



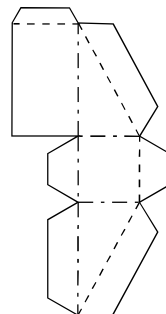
⑬波 (前)

/ wave front

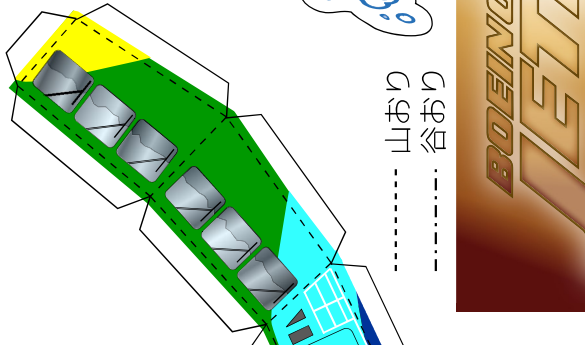


⑧前支柱へこみ

/ front recess

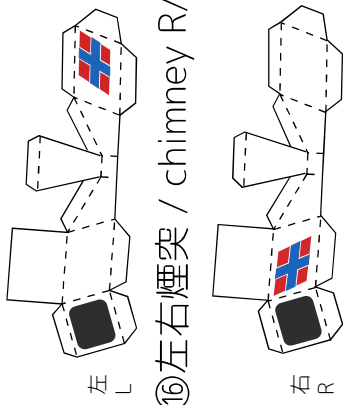


山あり  
谷あり

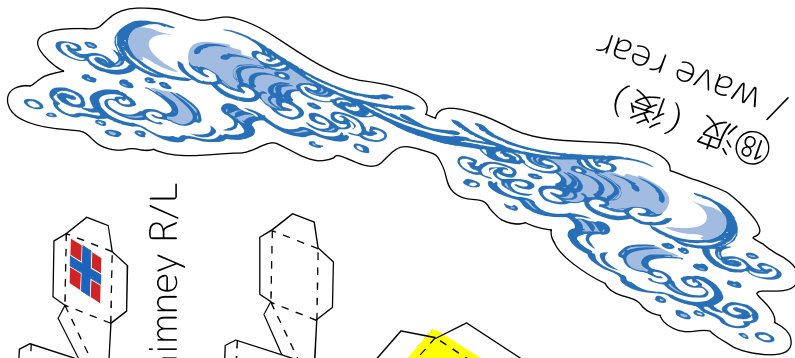


⑭波 (後)

/ wave rear



⑮左右煙突 / chimney R/L



⑫後羽根

/ rear wing



速度: 43.0kt (時速約80km)

全長: 27.4m

全幅: 8.5m

総トン数: 281t (旧表示)

馬力: 3,800馬力x2

旅客定員: 254名

東海汽船: 虹  
Seven Islands Niji



製作: いとーと

<https://itoht2.wixsite.com/paper>